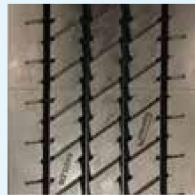


# New Pattern

## KH 211



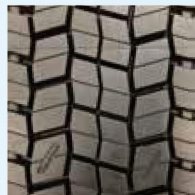
- Recommended for Buses or Trailer Position
- Better traction to ensure safety on the road
- Wider footprint for better stability
- Excellent for high mileage applications

Width (mm)	Depth (mm)
205	19.0
220	19.0
230	19.0
240	19.0
250	19.0

Allow 3% commercial tolerance



## KM 811



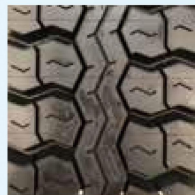
- Excellent block pattern for drive applications
- Used for maximum traction for demanding applications
- Good self cleaning due to open shoulder design
- Transmits maximum engine power to the road

Width (mm)	Depth (mm)
220	18.0
230	18.0
240	18.0
250	18.0
260	18.0

Allow 3% commercial tolerance



## KM 818



- Longitudinal ribs design with open groove design
- All season tread design for various applications
- Applicable to both Mix and Trailer
- Non directional for easy matching

Width (mm)	Depth (mm)
220	21.0
230	21.0
240	21.0
250	21.0

Allow 3% commercial tolerance



**GOTRAYS GLOBAL SDN BHD** since 1998

耀乾轮胎科技青岛有限公司

Hannah Lan (澜函娜)

Whatsapp +86 17011268668

Wechat +86 17011268668

Email: gotrayshannah@gmail.com



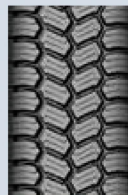
## KM 45



- Large tread pattern blocks
- Excellent mileage and traction
- Open lateral shoulder grooves improved wet traction
- Directional



## KM 71



- Block pattern with sharp shoulder
- Open shoulder designs with deep sipes
- Very good self-cleaning with open shoulder block
- Non Directional



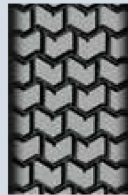
## KM 74



- Durable 3-rib deep tread application
- Suitable for harshest on/off road application
- Wide grooves are designed to reduce stone retention
- Non Directional



## KM 76



- Block pattern with offset shoulder block
- Good self-cleaning with open shoulder block
- Tough compound for all kinds of on/off roads
- Directional



Width (mm)	Depth (mm)
240	21.0
250	21.0
260	21.0

Allow 3% commercial tolerance

Width (mm)	Depth (mm)
230	19.0
240	19.0
250	19.0
260	19.0
295	14.7

Allow 3% commercial tolerance

Width (mm)	Depth (mm)
203	17.0
210	17.0
220	17.0
230	17.0
240	17.0

Allow 3% commercial tolerance

Width (mm)	Depth (mm)
145	13.5
155	13.5
165	16.0
180	16.0

Allow 3% commercial tolerance

## TECHNICAL SPECIFICATION

## KM 46



- Suitable for all-weather use
- Good transmission of traction forces on wet and dry roads
- Good self-cleaning due to open shoulder design
- Directional



## KM 722



- Deep traction drive pattern
- Resistant to irregular wear
- Excellent resistant to stone penetration & retention
- Non Directional



## KM 75



- Directionally stable due to closed shoulders
- Very good self-cleaning due to distinct conical-profile blocks
- Good transmission of traction forces due to solid blocks in the centre of the tread
- Non Directional



Width (mm)	Depth (mm)
180	14.5
194	14.5
208	14.5
220	14.5
230	14.5
240	14.5
255	14.5

Allow 3% commercial tolerance

Width (mm)	Depth (mm)
203	17.0
220	17.0
230	17.0
250	17.0

Allow 3% commercial tolerance

Width (mm)	Depth (mm)
195	14.5
203	15.0
212	16.0
218	16.0
230	16.0
240	17.0
250	17.0

Allow 3% commercial tolerance



## KM 87



- Improved traction
- Open shoulder grooves enhance traction on all road conditions
- Most suitable for drive axle of trucks
- Directional



## KT 1



- Ribbed tread with continuous rounded shoulders
- Smooth running
- High mileage per 32" performance
- Non Directional



Width (mm)	Depth (mm)
230	21.5
240	21.5
250	21.5
260	21.5
270	21.5

Allow 3% commercial tolerance

Width (mm)	Depth (mm)
120	11.0
127	11.0
135	11.0
142	11.0
152	11.0
160	12.0
170	13.0
180	13.0
190	13.0
194	13.0
200	13.0
210	14.0
215	14.0
230	15.0

Allow 3% commercial tolerance

## TECHNICAL SPECIFICATION

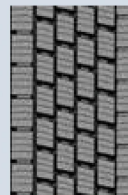
## KSRL



- Good transmission of traction forces particularly on unpaved surfaces
- Resistant to tears and cuts due to specially formulated compound
- Highly recommended for high propulsion power vehicles
- Non Directional



## KW 55



- Block pattern for all seasons including winter
- Excellent grip during winter and wet conditions
- Excellent mileage and fuel savings
- Non Directional

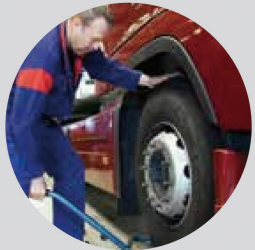


Width (mm)	Depth (mm)
170	15.0
180	18.5
184	20.5
198	20.5
205	20.5
215	16.3
220	21.0
230	21.0
240	21.0
250	21.0

Allow 3% commercial tolerance

Width (mm)	Depth (mm)
240	22
250	22
260	22

Allow 3% commercial tolerance



Pattern Catalogue 2023



**GOTRAYS GLOBAL SDN BHD** since 1998





## TECHNICAL SPECIFICATION

### KH 14



- Block-tyre tread with closed shoulders
- Good straight-running stability
- Good traction on wet and dry surfaces
- Non Directional



Width (mm)	Depth (mm)
100	8.0
110	8.0
120	10.0
127	10.0
140	11.0
150	13.0
160	13.0
170	13.0
180	14.0
194	15.0
200	16.0

Allow 3% commercial tolerance

### KH 25



- Longitudinal ribs with closed shoulders
- All-position tread design
- Excellent mileage performance, especially on trailing axes
- Non Directional

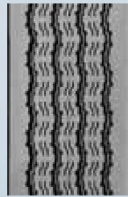


Width (mm)	Depth (mm)
210	15.5
220	15.5
240	15.5

Allow 3% commercial tolerance



### KH 86



- Directionally stable
- Smooth running
- Specially designed to provide fuel-saving and low-rolling resistance
- Non Directional



Width (mm)	Depth (mm)
180	12.0
194	12.0
203	12.0
215	12.0
220	12.0
230	12.0
250	13.0

Allow 3% commercial tolerance

## TECHNICAL SPECIFICATION

### KH 88



- Longitudinal rib design with closed Shoulders
- Good traction on wet and dry roads due to distinct sipes
- Grooves designed to resist stone penetration and casing damage
- Non Directional

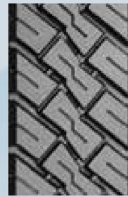


Width (mm)	Depth (mm)
180	15.0
194	15.0
200	16.0
205	16.0
210	16.0
220	16.0
230	16.0
240	16.0
250	16.0

Allow 3% commercial tolerance



### KL 65



- Good transmission of traction forces particularly on unpaved surfaces
- Resistant to tears and cuts due to specially formulated compound
- Highly recommended for high propulsion power vehicles
- Non Directional



Width (mm)	Depth (mm)
210	22.0
220	22.0
230	22.0

Allow 3% commercial tolerance

### KM 15



- Robust tread with very large contact area
- Good transmission of traction forces particularly on unpaved surfaces
- Very good self-cleaning due to open-shoulder design
- Non Directional



Width (mm)	Depth (mm)
130	12.0
140	12.0
150	12.0
160	13.0
180	15.0
194	15.0
203	15.0
218	15.5
230	16.0

Allow 3% commercial tolerance

## Speedflex Cushion Gum



- Ultra low temperature curing, as low as 99°C
- Maximum tackiness
- Maximum Bond
- Best Heat Dispersion
- Faster Curing

Also available in for AZ™ Extruder Format packed with double insulated box. This product is known for its smooth and uniform extrusion.

Width:  
100mm to 900mm

Thickness:  
0.8mm, 1.0mm, 1.2mm  
and 1.4mm

AZ GUM:  
55mm X 8mm

Allow 3% commercial tolerance

### KH 27



- Ribbed tread with continuous round shoulder
- For short and long haul range operations
- Smooth running and high mileage performance
- Non Directional



Width (mm)	Depth (mm)
120	12.2
130	13.0
140	13.0
150	14.0
160	14.0
170	14.0
180	14.5
188	14.5
194	15.5
203	15.5
210	15.5
215	15.5
220	15.5
230	15.5
240	15.5
250	15.5

Allow 3% commercial tolerance

### KH 28



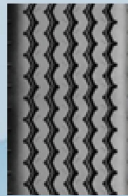
- Smooth running
- Good transmission of traction forces due to distinctive sipes
- Fuel-savings due to low-rolling resistance
- Non Directional



Width (mm)	Depth (mm)
194	19.0
203	19.0
210	19.0
220	19.0
230	19.0
240	19.0
250	19.0
262	19.0

Allow 3% commercial tolerance

### KH 90W



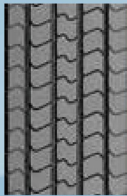
- Longitudinal rib design with closed shoulders and wings
- Low stress on casing due to minimal tread movement and cool-running compound
- Good straight-running stability
- Non Directional



Width (mm)	Depth (mm)
295	14.7

Allow 3% commercial tolerance

### KH 91



- For long-range operation
- Straight-line circumferential grooves for good water evacuation
- Good mileage performance
- Non Directional



Width (mm)	Depth (mm)
176	9.5
194	9.5
203	9.5
210	9.5
215	9.5
220	9.5
230	9.5

Allow 3% commercial tolerance

### KM 16



- Longitudinal block tyre tread with open shoulders
- Straight-running stability due to longitudinal treads
- Good traction and running properties
- Non Directional



Width (mm)	Depth (mm)
130	12.0
140	13.0
150	14.0
160	15.0
170	16.0
180	16.0
190	17.0
203	17.0
215	17.0

Allow 3% commercial tolerance

### KM 32



- Highly resistant to lateral shearing forces due to rounded shoulders
- Directionally stable due to closed shoulders
- Good transmission of traction forces due to solid block in centre of tread
- Non Directional



Width (mm)	Depth (mm)
180	16.0
194	16.5
203	16.5
210	16.5
215	16.5
220	16.5
230	16.5
240	16.5
250	16.5

Allow 3% commercial tolerance

## Gum Cord



- Same formula as the superior Speedflex™ Cushion Gum
- Smooth extrusion
- Ultra tacky

Formulated with the same great formula of the Speedflex™Cushion Gum, it would mean that there is a natural chemical reaction between the them. This will give extremely good bond in preserving the bonding strength for maximum durability.

They are prepared in 6mm or 8mm diameter.

Thickness:  
6mm and 8mm

Allow 3% commercial tolerance

### KH 34



- Longitudinal ribs with closed shoulders
- Good performing all rounder on commercial vehicles
- Good self-cleaning due to open tread design
- Non Directional



Width (mm)	Depth (mm)
180	15.0
195	15.5
203	15.5
210	15.5
220	15.5
230	15.5
240	15.5
250	15.5
260	15.5
270	15.5

Allow 3% commercial tolerance

### KH 42



- Good transmission of traction forces on wet and dry roads
- Good self-cleaning due to open shoulders
- All-season tread
- Non Directional



Width (mm)	Depth (mm)
194	16.5
204	16.5
215	16.5
220	16.5
230	16.5
250	16.5

Allow 3% commercial tolerance

### KH 95W



- Longitudinal ribs with closed shoulders and wings
- Low stress on casing due to minimal tread movement and cool-running compound
- Good straight-running stability
- Non Directional



Width (mm)	Depth (mm)
287	14.5
295	14.5
305	14.5

Allow 3% commercial tolerance

### KL 60



- Good transmission of traction forces
- Very good self-cleaning due to open tread design
- Cut and tear resistant due to specially formulated compound
- Non Directional



Width (mm)	Depth (mm)
140	12.0
150	12.0
160	13.0
170	14.0
180	16.5
185	16.5
190	16.5
195	16.5
200	17.0
215	18.0
220	19.0
230	19.0
240	19.0
250	21.0

Allow 3% commercial tolerance

### KM 36



- Centre staggered large blocks designed to reduce noise with excellent traction in dry and wet road conditions
- Compounded with anti-cutting and chipping properties to enhance durability
- Deep tread design for longer mileage
- Non Directional



Width (mm)	Depth (mm)
220	19.0
240	19.0
250	19.0
260	19.0

Allow 3% commercial tolerance

### KM 38



- Good self-cleaning with open shoulder block
- Resistant to cuts and tears due to specially formulated compound
- Excellent grip on wet surfaces
- Non Directional



Width (mm)	Depth (mm)
230	18.5
240	18.5
250	18.5
260	18.5

Allow 3% commercial tolerance

## Orbitread



- Used for Mould Cure Retreading
- Multiple formulas for different applications.
- Outstanding Mileage
- Extreme Cut and Chip Resistance
- Efficient Compound for Manufacturing

Comes in a variety of specially developed compound to suit multiple applications, different positions as well as different operating conditions.

If you have something specific, we would be happy to provide a consultation of the compound selection to give you the edge in the business.

Dimension:  
75mm X 8mm

Allow 3% commercial tolerance